

Signify Classified - Internal  
Cooper Lighting Solutions Photometric Lab  
1121 Highway 74 South  
Peachtree City, GA 30269



Scaled data based on original data using  
LM-79-2019 Approved Method: Electrical and Photometric Measurements of Solid-  
State Lighting Products

Test Report Prepared for  
Cooper Lighting Solutions

Brand: STREETWORKS

Report Number: P358960

Luminaire Tested: NVN-SA6B-740-U-5WQ

Issue Date: 3/3/2020

**Test Information**

Test Method: LM-79-2019  
Report Number: P358960  
TEST IS SCALED FROM IESNA LM-79-08 TEST DATA (G2-1903-205-2)  
Test Lab: INNOVATION CENTER  
Issue Date: 3/3/2020  
Manufacturer: COOPER LIGHTING SOLUTIONS  
Product Line: STREETWORKS  
Catalog Number: NVN-SA6B-740-U-5WQ  
Description: NAVION ROADWAY AND AREA LUMINAIRE  
(6) 70 CRI, 4000K, 800mA LIGHTSQUARES WITH 16 LEDS EACH AND TYPE V WIDE OPTICS  
Light Source: -  
Ballast/Driver: ELECTRONIC DRIVER

**Summary**

Lumens per Lamp: N/A  
Luminaire Lumens: 35980 lumens  
Efficiency: N/A  
Efficacy: 144.5 lumens/watt  
Luminous Opening: Rectangular (W 1' x L: 1.5' x H: 0')  
IES Classification: Type V - Short  
BUG Rating: B5 - U0 - G4

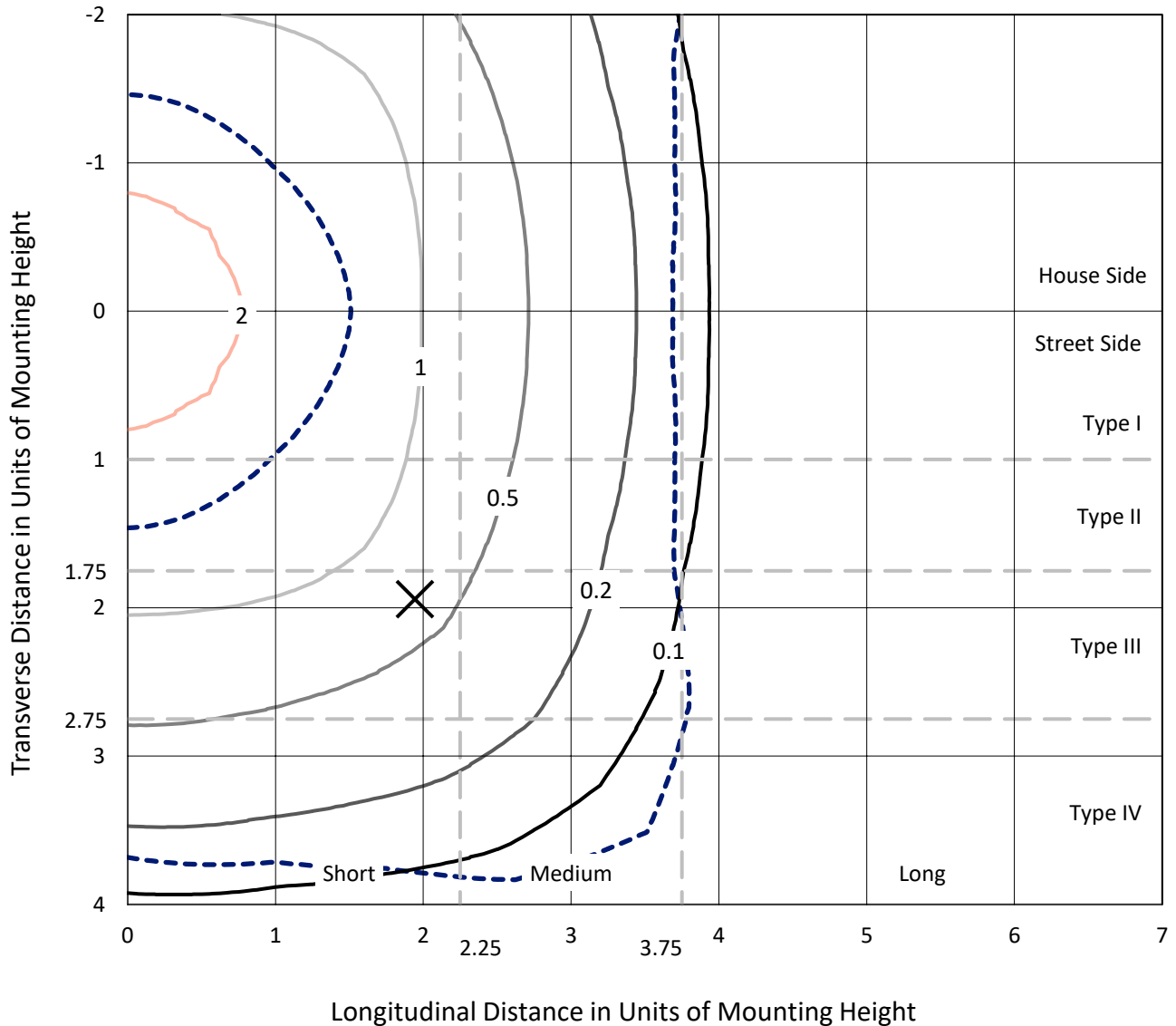
Input Watts (W): 249  
Input Voltage (V): NR  
Input Current (Ain): NR  
Voltage Rise (V): NR  
Power Factor: NR  
Total Harmonic Distortion (THDi): NR  
Frequency (hertz): 60  
Stabilization Time: NR  
Operation Time: NR  
Ambient Temperature (°C): NR  
Test Distance: 28.75 FT



REPORT NUMBER: P358960  
 CATALOG NUMBER: NVN-SA6B-740-U-5WQ

### Iso-Footcandle Lines of Horizontal Illumination

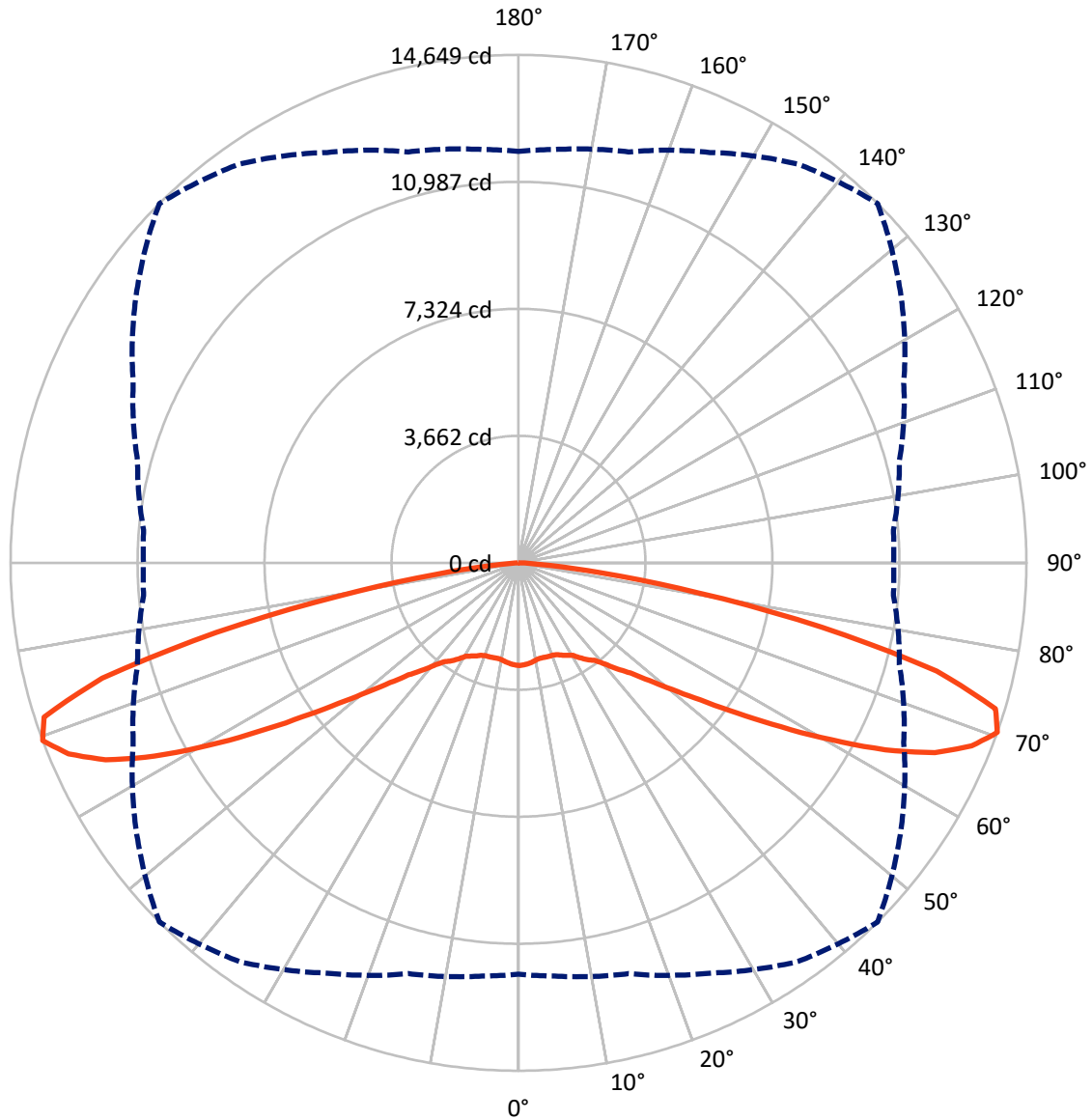
✕ Max cd  
 - - - 1/2 Max cd



Based on 30 foot mounting height. Maximum calculated value = 3.3 fc  
 Type V - Short - N/A

REPORT NUMBER: P358960  
CATALOG NUMBER: NVN-SA6B-740-U-5WQ

### Luminous Intensity Polar Plot



— Vertical Plane Through 45-Deg Lateral      - - - Horizontal Cone Through 70-Deg Vertical

REPORT NUMBER: P358960  
 CATALOG NUMBER: NVN-SA6B-740-U-5WQ

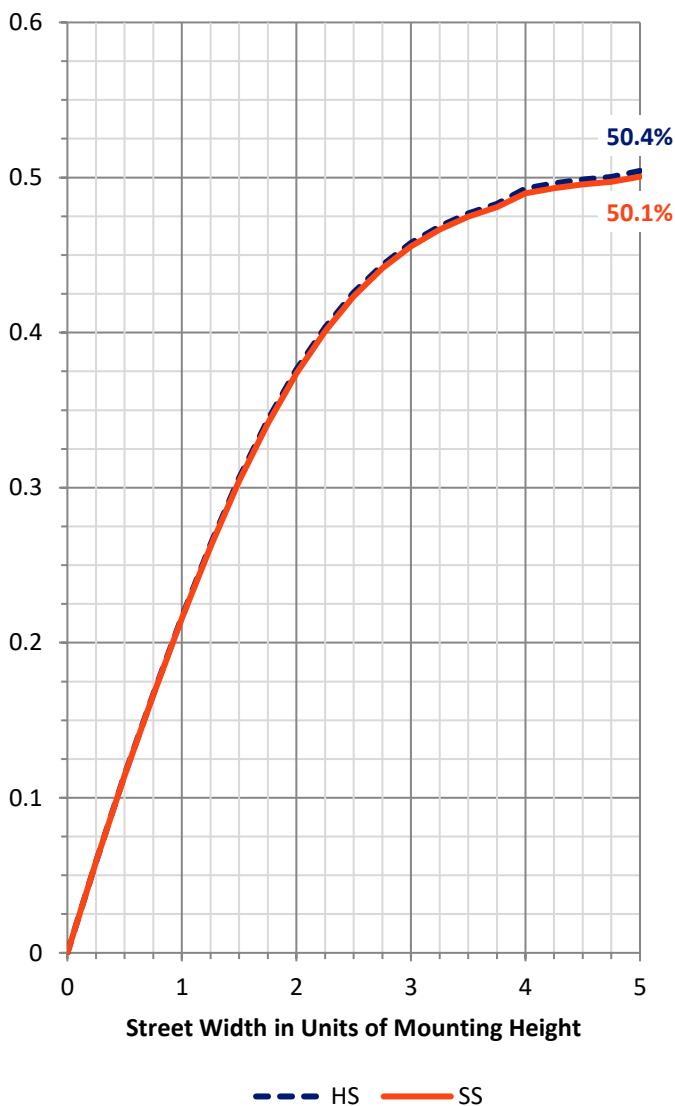
**FLUX DISTRIBUTION:**

|                    |           | Downward | Upward | Total   |
|--------------------|-----------|----------|--------|---------|
| <b>House Side</b>  | Lumens    | 17990.0  | 0.0    | 17990.0 |
|                    | % Fixture | 50.0     | 0.0    | 50.0    |
| <b>Street Side</b> | Lumens    | 17990.0  | 0.0    | 17990.0 |
|                    | % Fixture | 50.0     | 0.0    | 50.0    |
| <b>Total</b>       | Lumens    | 35980.0  | 0.0    | 35980.0 |
|                    | % Fixture | 100.0    | 0.0    | 100.0   |

**ZONAL LUMENS:**

| Zone      | Lumens  | % Fixture |
|-----------|---------|-----------|
| 0°-10°    | 276.4   | 0.8       |
| 10°-20°   | 807.3   | 2.2       |
| 20°-30°   | 1376.4  | 3.8       |
| 30°-40°   | 2150.7  | 6.0       |
| 40°-50°   | 3644.9  | 10.1      |
| 50°-60°   | 6646.8  | 18.5      |
| 60°-70°   | 11443.0 | 31.8      |
| 70°-80°   | 8969.4  | 24.9      |
| 80°-90°   | 665.1   | 1.8       |
| 90°-100°  | 0.0     | 0.0       |
| 100°-110° | 0.0     | 0.0       |
| 110°-120° | 0.0     | 0.0       |
| 120°-130° | 0.0     | 0.0       |
| 130°-140° | 0.0     | 0.0       |
| 140°-150° | 0.0     | 0.0       |
| 150°-160° | 0.0     | 0.0       |
| 160°-170° | 0.0     | 0.0       |
| 170°-180° | 0.0     | 0.0       |
| 0°-90°    | 35980.0 | 100.0     |
| 0°-180°   | 35980.0 | 100.0     |

**Coefficient of Utilization**

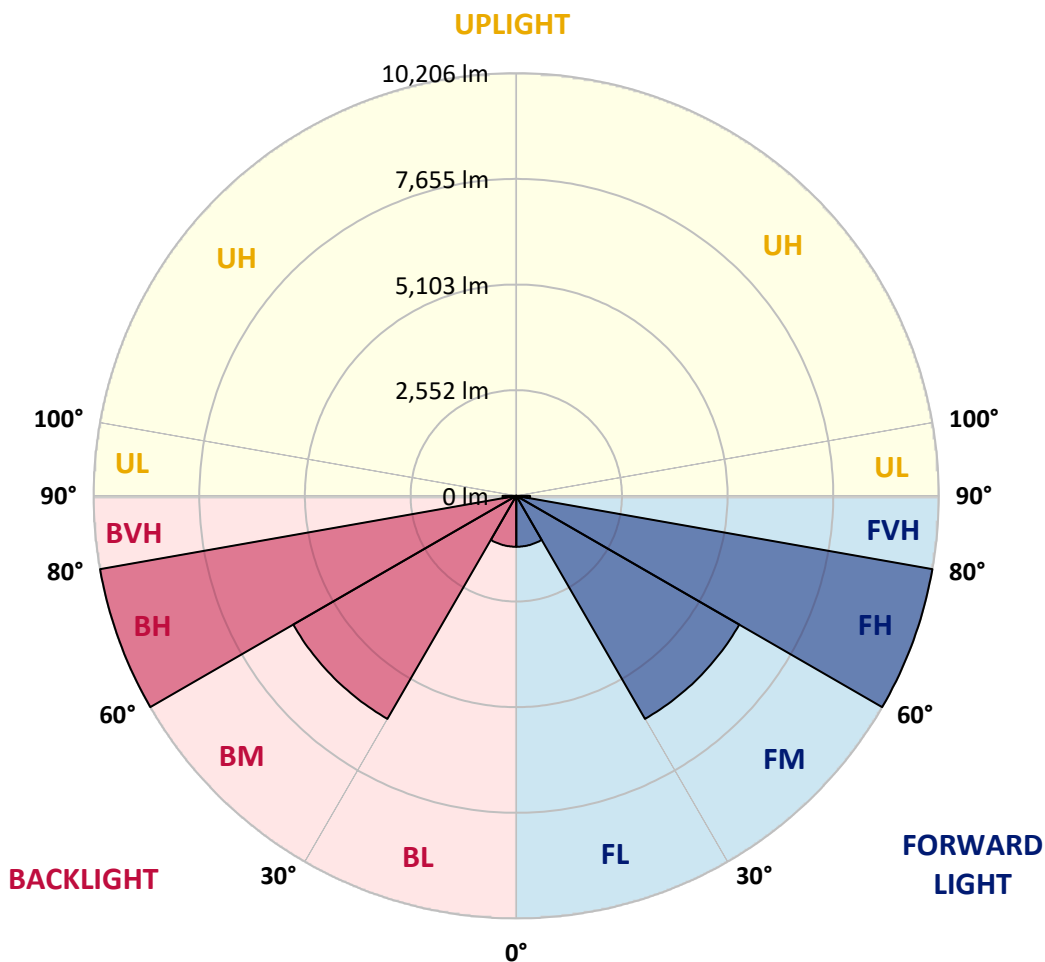


REPORT NUMBER: P358960  
 CATALOG NUMBER: NVN-SA6B-740-U-5WQ

**LUMINAIRE CLASSIFICATION SYSTEM LUMEN TABLE AND BUG RATING:**

| Zone           | Lumens  | % Fixture | Zone Rating/Lumen Limit |      |          |
|----------------|---------|-----------|-------------------------|------|----------|
|                |         |           | B                       | U    | G        |
| FL (0°-30°)    | 1230.1  | 3.4       |                         |      |          |
| FM (30°-60°)   | 6221.2  | 17.3      |                         |      |          |
| FH (60°-80°)   | 10206.2 | 28.4      |                         |      | G4/12000 |
| FVH (80°-90°)  | 332.5   | 0.9       |                         |      | G3/500   |
| BL (0°-30°)    | 1230.1  | 3.4       | B3/2500                 |      |          |
| BM (30°-60°)   | 6221.2  | 17.3      | B4/8500                 |      |          |
| BH (60°-80°)   | 10206.2 | 28.4      | B5                      |      | G4/12000 |
| BVH (80°-90°)  | 332.5   | 0.9       |                         |      | G3/500   |
| UL (90°-100°)  | 0.0     | 0.0       |                         | U0/0 |          |
| UH (100°-180°) | 0.0     | 0.0       |                         | U0/0 |          |

**BUG Rating: B5-U0-G4**  
 Type V Short





REPORT NUMBER: P358960

CATALOG NUMBER: NVN-SA6B-740-U-5WQ

**CANDELA DISTRIBUTION (FULL):**

|       | 0°      | 5°      | 15°     | 25°     | 35°     | 45°     | 55°     | 65°     | 75°     | 85°     | 90°     |
|-------|---------|---------|---------|---------|---------|---------|---------|---------|---------|---------|---------|
| 0°    | 2961.2  | 2961.2  | 2961.2  | 2961.2  | 2961.2  | 2961.2  | 2961.2  | 2961.2  | 2961.2  | 2961.2  | 2961.2  |
| 2.5°  | 2948.1  | 2951.6  | 2948.1  | 2950.4  | 2944.5  | 2946.9  | 2946.9  | 2946.9  | 2945.7  | 2946.9  | 2944.5  |
| 5°    | 2921.9  | 2924.3  | 2919.5  | 2921.9  | 2918.3  | 2921.9  | 2923.1  | 2921.9  | 2919.5  | 2920.7  | 2915.9  |
| 7.5°  | 2882.6  | 2885.0  | 2881.4  | 2885.0  | 2880.2  | 2886.2  | 2885.0  | 2881.4  | 2877.8  | 2877.8  | 2873.1  |
| 10°   | 2861.2  | 2862.4  | 2852.9  | 2849.3  | 2838.6  | 2841.0  | 2844.5  | 2848.1  | 2851.7  | 2858.8  | 2857.6  |
| 12.5° | 2862.4  | 2862.4  | 2848.1  | 2832.6  | 2817.1  | 2820.7  | 2826.7  | 2839.8  | 2854.0  | 2867.1  | 2868.3  |
| 15°   | 2874.3  | 2873.1  | 2851.7  | 2826.7  | 2816.0  | 2826.7  | 2830.2  | 2838.6  | 2861.2  | 2883.8  | 2885.0  |
| 17.5° | 2882.6  | 2882.6  | 2849.3  | 2820.7  | 2819.5  | 2836.2  | 2835.0  | 2838.6  | 2863.6  | 2896.9  | 2898.1  |
| 20°   | 2898.1  | 2898.1  | 2855.2  | 2824.3  | 2824.3  | 2842.1  | 2843.3  | 2849.3  | 2874.3  | 2911.2  | 2917.1  |
| 22.5° | 2932.6  | 2933.8  | 2888.6  | 2863.6  | 2865.9  | 2876.7  | 2880.2  | 2889.7  | 2912.4  | 2952.8  | 2960.0  |
| 25°   | 2981.4  | 2983.8  | 2937.4  | 2923.1  | 2931.4  | 2951.6  | 2949.3  | 2956.4  | 2981.4  | 3020.7  | 3027.8  |
| 27.5° | 3049.2  | 3043.3  | 3000.4  | 2994.5  | 3002.8  | 3017.1  | 3015.9  | 3017.1  | 3037.3  | 3073.0  | 3081.4  |
| 30°   | 3137.3  | 3134.9  | 3104.0  | 3107.6  | 3104.0  | 3099.2  | 3100.4  | 3109.9  | 3120.6  | 3149.2  | 3157.5  |
| 32.5° | 3223.0  | 3225.4  | 3206.3  | 3224.2  | 3250.4  | 3268.2  | 3240.9  | 3214.7  | 3202.8  | 3218.2  | 3225.4  |
| 35°   | 3377.7  | 3383.7  | 3353.9  | 3342.0  | 3377.7  | 3430.1  | 3352.7  | 3309.9  | 3333.7  | 3353.9  | 3359.9  |
| 37.5° | 3640.7  | 3644.3  | 3594.3  | 3546.7  | 3520.5  | 3570.5  | 3493.2  | 3496.7  | 3580.1  | 3618.1  | 3616.9  |
| 40°   | 3940.7  | 3941.9  | 3908.5  | 3866.9  | 3821.7  | 3833.6  | 3802.6  | 3812.1  | 3866.9  | 3901.4  | 3910.9  |
| 42.5° | 4297.7  | 4294.2  | 4241.8  | 4182.3  | 4169.2  | 4181.1  | 4128.7  | 4121.6  | 4184.7  | 4246.5  | 4247.7  |
| 45°   | 4760.7  | 4752.4  | 4684.5  | 4619.1  | 4556.0  | 4529.8  | 4516.7  | 4551.2  | 4638.1  | 4695.2  | 4696.4  |
| 47.5° | 5259.4  | 5236.8  | 5201.1  | 5148.7  | 5094.0  | 5067.8  | 5046.3  | 5063.0  | 5126.1  | 5148.7  | 5151.1  |
| 50°   | 5772.4  | 5777.1  | 5784.3  | 5764.0  | 5743.8  | 5735.5  | 5679.5  | 5647.4  | 5666.4  | 5624.8  | 5618.8  |
| 52.5° | 6380.5  | 6390.1  | 6459.1  | 6517.4  | 6551.9  | 6569.8  | 6463.8  | 6353.2  | 6291.3  | 6210.3  | 6186.5  |
| 55°   | 7098.2  | 7113.7  | 7214.8  | 7376.7  | 7543.3  | 7631.4  | 7439.8  | 7232.7  | 7041.1  | 6889.9  | 6841.1  |
| 57.5° | 7898.0  | 7925.4  | 8064.6  | 8375.3  | 8716.9  | 8925.1  | 8601.4  | 8225.3  | 7855.2  | 7637.4  | 7599.3  |
| 60°   | 8835.9  | 8862.1  | 9054.9  | 9500.0  | 10053.4 | 10366.4 | 9876.1  | 9260.8  | 8800.2  | 8591.9  | 8521.7  |
| 62.5° | 9952.3  | 9954.6  | 10191.5 | 10711.6 | 11442.4 | 11878.0 | 11213.8 | 10391.4 | 9916.5  | 9665.4  | 9597.6  |
| 65°   | 11153.1 | 11159.1 | 11404.3 | 11966.0 | 12721.8 | 13195.5 | 12445.7 | 11588.7 | 11007.9 | 10637.8 | 10585.4 |
| 67.5° | 12001.7 | 12026.7 | 12285.0 | 12961.0 | 13668.0 | 14095.3 | 13319.3 | 12350.5 | 11679.2 | 11237.6 | 11193.6 |
| 70°   | 11866.1 | 11963.7 | 12267.1 | 13056.2 | 14039.3 | 14648.7 | 13460.9 | 12260.0 | 11374.5 | 10853.2 | 10816.3 |
| 72.5° | 10348.6 | 10535.4 | 10940.1 | 11975.6 | 13547.8 | 14386.9 | 12688.5 | 10980.6 | 9978.4  | 9534.5  | 9467.9  |
| 75°   | 7047.0  | 7350.5  | 7961.1  | 9454.8  | 11574.5 | 12456.4 | 10681.8 | 8754.9  | 7812.3  | 7198.2  | 7153.0  |
| 77.5° | 3142.1  | 3211.1  | 3984.7  | 5704.5  | 7987.3  | 8945.4  | 7761.1  | 5727.1  | 4298.9  | 3428.9  | 3245.6  |
| 80°   | 876.0   | 886.7   | 1183.0  | 2124.5  | 3997.8  | 5255.8  | 4291.8  | 2231.6  | 1254.4  | 884.3   | 833.1   |
| 82.5° | 278.5   | 302.3   | 369.0   | 551.1   | 1343.7  | 2398.2  | 1379.4  | 595.1   | 423.7   | 338.0   | 304.7   |
| 85°   | 135.7   | 134.5   | 186.9   | 223.8   | 342.8   | 530.8   | 365.4   | 276.1   | 241.6   | 160.7   | 145.2   |
| 87.5° | 57.1    | 58.3    | 86.9    | 78.6    | 100.0   | 85.7    | 117.8   | 123.8   | 129.7   | 71.4    | 61.9    |
| 90°   | 0.0     | 0.0     | 0.0     | 0.0     | 0.0     | 0.0     | 0.0     | 0.0     | 0.0     | 0.0     | 0.0     |

LM-79-08: Approved Method: Electrical and Photometric Measurements of Solid-  
State Lighting Products

Report Prepared for

Cooper Lighting Solutions

MCGRAW, INVUE, LUMARK AND STREETWORKS

DATA VALID FOR LUMINAIRES UTILIZING SA LIGHT ENGINES

Report Number: SP1-2101-121-2

Luminaire Tested: IFLD-S-SA2A-740-U-T3R-HSS

Test Date: 03/05/2021



**Test Information**

Test Method: LM-79-08  
 Report Number: SP1-2101-121-2  
 Test Lab: COOPER LIGHTING SOLUTIONS  
 Photometer: SP1  
 Measurement Geometry: 4π  
 Issue Date: 03/05/2021  
 Manufacturer: COOPER LIGHTING SOLUTIONS (FORMERLY EATON)  
 Product Line: STREETWORKS  
 Catalog Number: **IFLD-S-SA2A-740-U-T3R-HSS**  
 Description: STREETWORKS INF FLOOD

SHIELD, DRIVER PROGRAMMED @ 615mA.

**Spectral Parameters**

|                           |         |           |      |      |       |
|---------------------------|---------|-----------|------|------|-------|
| CCT (K):                  | 3905    | CRI (Ra): | 71.2 | R9:  | -29.7 |
| CIE u':                   | 0.2273  | R1:       | 68.9 | R10: | 46.2  |
| CIE v':                   | 0.5024  | R2:       | 77.0 | R11: | 68.8  |
| Duv:                      | -0.0008 | R3:       | 84.0 | R12: | 45.6  |
| CIE x:                    | 0.3841  | R4:       | 71.6 | R13: | 69.5  |
| CIE y:                    | 0.3774  | R5:       | 68.9 | R14: | 90.7  |
| CIE z:                    | 0.2385  | R6:       | 68.3 |      |       |
| Peak Wavelength (nm):     | 443     | R7:       | 78.7 |      |       |
| Dominant Wavelength (nm): | 579     | R8:       | 52.2 |      |       |
| Purity:                   | 28.7    |           |      |      |       |
| Rf:                       | 71.7    |           |      |      |       |
| Rg:                       | 96.9    |           |      |      |       |



**Test Conditions**

Stabilization Time: 211M  
 Operation Time: 12H  
 Room Temperature (°C) / RH%: 24.8/312%  
 Sphere Temperature (°C): 24.1

REPORT NUMBER: SP1-2101-121-2

| Measurement and Test Equipment |                       |                  |                      |
|--------------------------------|-----------------------|------------------|----------------------|
| Instrument                     | Identification Number | Calibration Date | Calibration Due Date |
| Photometer                     | IN0058                | 1/31/2021        | 7/31/2021            |
| Power Meter                    | IN0071                | 12/1/2020        | 12/1/2021            |
| AC Power Source                | IN0063                | 12/1/2020        | 12/1/2021            |
| DC Power Source                | IN0208                | 12/1/2020        | 12/1/2021            |
| Sphere Thermometer             | IN0085                | 12/1/2020        | 12/1/2021            |
| Room Thermometer               | IN0046                | 12/1/2020        | 12/1/2021            |

REPORT NUMBER: SP1-2101-121-2

CIE 1931 Chromaticity Diagram



CIE 1931 Chromaticity Diagram with 2017 ANSI 7-Step and 4-Step Quadrangles



CCT = 3905K  
 CIE x = 0.3841  
 CIE y = 0.3774  
 Duv = -0.0008

Point lies inside the ANSI 4000K 4-step quadrangle

REPORT NUMBER: SP1-2101-121-2

**Photopic Flux vs. Wavelength**



#####

| λ (nm) | Power (µW/nm) | Lumens (φ/nm) | λ (nm) | Power (µW/nm) | Lumens (φ/nm) | λ (nm) | Power (µW/nm) | Lumens (φ/nm) | λ (nm) | Power (µW/nm) | Lumens (φ/nm) | λ (nm) | Power (µW/nm) | Lumens (φ/nm) |
|--------|---------------|---------------|--------|---------------|---------------|--------|---------------|---------------|--------|---------------|---------------|--------|---------------|---------------|
| 360    | 2304          | 0.0           | 490    | 19043         | 2.7           | 620    | 97577         | 25.4          | 750    | 4830          | 0.0           | 880    | 3505          | 0.0           |
| 365    | 2150          | 0.0           | 495    | 26606         | 4.8           | 625    | 90158         | 19.9          | 755    | 4664          | 0.0           | 885    | 2991          | 0.0           |
| 370    | 2146          | 0.0           | 500    | 36376         | 8.0           | 630    | 82240         | 14.9          | 760    | 4006          | 0.0           | 890    | 2327          | 0.0           |
| 375    | 2332          | 0.0           | 505    | 47714         | 13.3          | 635    | 74361         | 11.2          | 765    | 3715          | 0.0           | 895    | 2775          | 0.0           |
| 380    | 2527          | 0.0           | 510    | 58741         | 20.2          | 640    | 66994         | 8.0           | 770    | 3696          | 0.0           | 900    | 2141          | 0.0           |
| 385    | 2304          | 0.0           | 515    | 68716         | 28.5          | 645    | 60405         | 5.8           | 775    | 3117          | 0.0           | 905    | 2421          | 0.0           |
| 390    | 2064          | 0.0           | 520    | 77136         | 37.4          | 650    | 53806         | 3.9           | 780    | 3062          | 0.0           | 910    | 2200          | 0.0           |
| 395    | 1856          | 0.0           | 525    | 83567         | 44.9          | 655    | 47610         | 2.7           | 785    | 2907          | 0.0           | 915    | 2716          | 0.0           |
| 400    | 1856          | 0.0           | 530    | 89283         | 52.6          | 660    | 42018         | 1.8           | 790    | 2655          | 0.0           | 920    | 2656          | 0.0           |
| 405    | 2374          | 0.0           | 535    | 94097         | 58.4          | 665    | 36742         | 1.2           | 795    | 2467          | 0.0           | 925    | 2671          | 0.0           |
| 410    | 4084          | 0.0           | 540    | 96845         | 63.1          | 670    | 32105         | 0.7           | 800    | 2609          | 0.0           | 930    | 3292          | 0.0           |
| 415    | 8543          | 0.0           | 545    | 100829        | 67.1          | 675    | 27946         | 0.5           | 805    | 2293          | 0.0           | 935    | 3188          | 0.0           |
| 420    | 18394         | 0.1           | 550    | 105648        | 71.8          | 680    | 24146         | 0.3           | 810    | 2188          | 0.0           | 940    | 1997          | 0.0           |
| 425    | 37987         | 0.2           | 555    | 110017        | 75.1          | 685    | 21191         | 0.2           | 815    | 2386          | 0.0           | 945    | 2623          | 0.0           |
| 430    | 67605         | 0.5           | 560    | 114586        | 77.9          | 690    | 18544         | 0.1           | 820    | 2712          | 0.0           | 950    | 2969          | 0.0           |
| 435    | 102160        | 1.2           | 565    | 118987        | 79.1          | 695    | 16058         | 0.1           | 825    | 2473          | 0.0           | 955    | 2277          | 0.0           |
| 440    | 135103        | 2.1           | 570    | 122326        | 79.5          | 700    | 14133         | 0.0           | 830    | 1969          | 0.0           | 960    | 4267          | 0.0           |
| 445    | 140126        | 2.9           | 575    | 125968        | 78.4          | 705    | 12309         | 0.0           | 835    | 1917          | 0.0           | 965    | 2034          | 0.0           |
| 450    | 102339        | 2.7           | 580    | 127613        | 75.8          | 710    | 11142         | 0.0           | 840    | 2248          | 0.0           | 970    | 3586          | 0.0           |
| 455    | 58751         | 2.0           | 585    | 129466        | 71.9          | 715    | 10143         | 0.0           | 845    | 2266          | 0.0           | 975    | 2505          | 0.0           |
| 460    | 36892         | 1.5           | 590    | 128813        | 66.6          | 720    | 9072          | 0.0           | 850    | 2558          | 0.0           | 980    | 2666          | 0.0           |
| 465    | 24637         | 1.3           | 595    | 126387        | 59.9          | 725    | 8130          | 0.0           | 855    | 2767          | 0.0           | 985    | 2934          | 0.0           |
| 470    | 16738         | 1.0           | 600    | 123477        | 53.2          | 730    | 7149          | 0.0           | 860    | 2826          | 0.0           | 990    | 4120          | 0.0           |
| 475    | 13456         | 1.1           | 605    | 118718        | 46.0          | 735    | 6311          | 0.0           | 865    | 2385          | 0.0           | 995    | 3858          | 0.0           |
| 480    | 13081         | 1.2           | 610    | 112091        | 38.5          | 740    | 5711          | 0.0           | 870    | 3194          | 0.0           | 1000   | 3405          | 0.0           |
| 485    | 14734         | 1.7           | 615    | 105039        | 31.7          | 745    | 5111          | 0.0           | 875    | 3189          | 0.0           |        |               |               |

REPORT NUMBER: SP1-2101-121-2

**Scotopic Flux vs. Wavelength**



**Scotopic Lumens: 10425.8 S/P: 1.47**

| λ (nm) | Power (µW/nm) | Lumens (φ/nm) | λ (nm) | Power (µW/nm) | Lumens (φ/nm) | λ (nm) | Power (µW/nm) | Lumens (φ/nm) | λ (nm) | Power (µW/nm) | Lumens (φ/nm) | λ (nm) | Power (µW/nm) | Lumens (φ/nm) |
|--------|---------------|---------------|--------|---------------|---------------|--------|---------------|---------------|--------|---------------|---------------|--------|---------------|---------------|
| 360    | 2304          | 0.0           | 490    | 19043         | 29.3          | 620    | 97577         | 1.2           | 750    | 4830          | 0.0           | 880    | 3505          | 0.0           |
| 365    | 2150          | 0.0           | 495    | 26606         | 43.0          | 625    | 90158         | 0.8           | 755    | 4664          | 0.0           | 885    | 2991          | 0.0           |
| 370    | 2146          | 0.0           | 500    | 36376         | 60.8          | 630    | 82240         | 0.5           | 760    | 4006          | 0.0           | 890    | 2327          | 0.0           |
| 375    | 2332          | 0.0           | 505    | 47714         | 81.1          | 635    | 74361         | 0.3           | 765    | 3715          | 0.0           | 895    | 2775          | 0.0           |
| 380    | 2527          | 0.0           | 510    | 58741         | 99.6          | 640    | 66994         | 0.2           | 770    | 3696          | 0.0           | 900    | 2141          | 0.0           |
| 385    | 2304          | 0.0           | 515    | 68716         | 113.9         | 645    | 60405         | 0.1           | 775    | 3117          | 0.0           | 905    | 2421          | 0.0           |
| 390    | 2064          | 0.0           | 520    | 77136         | 122.6         | 650    | 53806         | 0.1           | 780    | 3062          | 0.0           | 910    | 2200          | 0.0           |
| 395    | 1856          | 0.0           | 525    | 83567         | 125.0         | 655    | 47610         | 0.0           | 785    | 2907          | 0.0           | 915    | 2716          | 0.0           |
| 400    | 1856          | 0.0           | 530    | 89283         | 123.1         | 660    | 42018         | 0.0           | 790    | 2655          | 0.0           | 920    | 2656          | 0.0           |
| 405    | 2374          | 0.1           | 535    | 94097         | 117.3         | 665    | 36742         | 0.0           | 795    | 2467          | 0.0           | 925    | 2671          | 0.0           |
| 410    | 4084          | 0.2           | 540    | 96845         | 107.0         | 670    | 32105         | 0.0           | 800    | 2609          | 0.0           | 930    | 3292          | 0.0           |
| 415    | 8543          | 0.9           | 545    | 100829        | 96.7          | 675    | 27946         | 0.0           | 805    | 2293          | 0.0           | 935    | 3188          | 0.0           |
| 420    | 18394         | 3.0           | 550    | 105648        | 86.4          | 680    | 24146         | 0.0           | 810    | 2188          | 0.0           | 940    | 1997          | 0.0           |
| 425    | 37987         | 9.3           | 555    | 110017        | 75.2          | 685    | 21191         | 0.0           | 815    | 2386          | 0.0           | 945    | 2623          | 0.0           |
| 430    | 67605         | 23.0          | 560    | 114586        | 64.0          | 690    | 18544         | 0.0           | 820    | 2712          | 0.0           | 950    | 2969          | 0.0           |
| 435    | 102160        | 45.7          | 565    | 118987        | 53.4          | 695    | 16058         | 0.0           | 825    | 2473          | 0.0           | 955    | 2277          | 0.0           |
| 440    | 135103        | 75.5          | 570    | 122326        | 43.2          | 700    | 14133         | 0.0           | 830    | 1969          | 0.0           | 960    | 4267          | 0.0           |
| 445    | 140126        | 93.8          | 575    | 125968        | 34.3          | 705    | 12309         | 0.0           | 835    | 1917          | 0.0           | 965    | 2034          | 0.0           |
| 450    | 102339        | 79.3          | 580    | 127613        | 26.3          | 710    | 11142         | 0.0           | 840    | 2248          | 0.0           | 970    | 3586          | 0.0           |
| 455    | 58751         | 51.3          | 585    | 129466        | 19.8          | 715    | 10143         | 0.0           | 845    | 2266          | 0.0           | 975    | 2505          | 0.0           |
| 460    | 36892         | 35.6          | 590    | 128813        | 14.3          | 720    | 9072          | 0.0           | 850    | 2558          | 0.0           | 980    | 2666          | 0.0           |
| 465    | 24637         | 26.0          | 595    | 126387        | 10.1          | 725    | 8130          | 0.0           | 855    | 2767          | 0.0           | 985    | 2934          | 0.0           |
| 470    | 16738         | 19.3          | 600    | 123477        | 7.0           | 730    | 7149          | 0.0           | 860    | 2826          | 0.0           | 990    | 4120          | 0.0           |
| 475    | 13456         | 16.8          | 605    | 118718        | 4.7           | 735    | 6311          | 0.0           | 865    | 2385          | 0.0           | 995    | 3858          | 0.0           |
| 480    | 13081         | 17.7          | 610    | 112091        | 3.0           | 740    | 5711          | 0.0           | 870    | 3194          | 0.0           | 1000   | 3405          | 0.0           |
| 485    | 14734         | 21.4          | 615    | 105039        | 1.9           | 745    | 5111          | 0.0           | 875    | 3189          | 0.0           |        |               |               |

REPORT NUMBER: SP1-2101-121-2

**Melanopic Flux vs. Wavelength**



**Melanopic Lumens: 3927.2 M/P: 0.55**

| λ (nm) | Power (µW/nm) | Lumens (φ/nm) | λ (nm) | Power (µW/nm) | Lumens (φ/nm) | λ (nm) | Power (µW/nm) | Lumens (φ/nm) | λ (nm) | Power (µW/nm) | Lumens (φ/nm) | λ (nm) | Power (µW/nm) | Lumens (φ/nm) |
|--------|---------------|---------------|--------|---------------|---------------|--------|---------------|---------------|--------|---------------|---------------|--------|---------------|---------------|
| 360    | 2304          | 0.0           | 490    | 19043         | 15.8          | 620    | 97577         | 0.1           | 750    | 4830          | 0.0           | 880    | 3505          | 0.0           |
| 365    | 2150          | 0.0           | 495    | 26606         | 22.0          | 625    | 90158         | 0.0           | 755    | 4664          | 0.0           | 885    | 2991          | 0.0           |
| 370    | 2146          | 0.0           | 500    | 36376         | 29.2          | 630    | 82240         | 0.0           | 760    | 4006          | 0.0           | 890    | 2327          | 0.0           |
| 375    | 2332          | 0.0           | 505    | 47714         | 36.6          | 635    | 74361         | 0.0           | 765    | 3715          | 0.0           | 895    | 2775          | 0.0           |
| 380    | 2527          | 0.0           | 510    | 58741         | 42.2          | 640    | 66994         | 0.0           | 770    | 3696          | 0.0           | 900    | 2141          | 0.0           |
| 385    | 2304          | 0.0           | 515    | 68716         | 44.9          | 645    | 60405         | 0.0           | 775    | 3117          | 0.0           | 905    | 2421          | 0.0           |
| 390    | 2064          | 0.0           | 520    | 77136         | 44.9          | 650    | 53806         | 0.0           | 780    | 3062          | 0.0           | 910    | 2200          | 0.0           |
| 395    | 1856          | 0.0           | 525    | 83567         | 42.4          | 655    | 47610         | 0.0           | 785    | 2907          | 0.0           | 915    | 2716          | 0.0           |
| 400    | 1856          | 0.0           | 530    | 89283         | 38.6          | 660    | 42018         | 0.0           | 790    | 2655          | 0.0           | 920    | 2656          | 0.0           |
| 405    | 2374          | 0.0           | 535    | 94097         | 33.9          | 665    | 36742         | 0.0           | 795    | 2467          | 0.0           | 925    | 2671          | 0.0           |
| 410    | 4084          | 0.2           | 540    | 96845         | 28.3          | 670    | 32105         | 0.0           | 800    | 2609          | 0.0           | 930    | 3292          | 0.0           |
| 415    | 8543          | 0.6           | 545    | 100829        | 23.4          | 675    | 27946         | 0.0           | 805    | 2293          | 0.0           | 935    | 3188          | 0.0           |
| 420    | 18394         | 2.1           | 550    | 105648        | 19.0          | 680    | 24146         | 0.0           | 810    | 2188          | 0.0           | 940    | 1997          | 0.0           |
| 425    | 37987         | 5.9           | 555    | 110017        | 14.8          | 685    | 21191         | 0.0           | 815    | 2386          | 0.0           | 945    | 2623          | 0.0           |
| 430    | 67605         | 14.3          | 560    | 114586        | 11.3          | 690    | 18544         | 0.0           | 820    | 2712          | 0.0           | 950    | 2969          | 0.0           |
| 435    | 102160        | 27.3          | 565    | 118987        | 8.4           | 695    | 16058         | 0.0           | 825    | 2473          | 0.0           | 955    | 2277          | 0.0           |
| 440    | 135103        | 45.1          | 570    | 122326        | 6.0           | 700    | 14133         | 0.0           | 830    | 1969          | 0.0           | 960    | 4267          | 0.0           |
| 445    | 140126        | 55.3          | 575    | 125968        | 4.2           | 705    | 12309         | 0.0           | 835    | 1917          | 0.0           | 965    | 2034          | 0.0           |
| 450    | 102339        | 47.2          | 580    | 127613        | 2.9           | 710    | 11142         | 0.0           | 840    | 2248          | 0.0           | 970    | 3586          | 0.0           |
| 455    | 58751         | 30.8          | 585    | 129466        | 1.9           | 715    | 10143         | 0.0           | 845    | 2266          | 0.0           | 975    | 2505          | 0.0           |
| 460    | 36892         | 21.7          | 590    | 128813        | 1.3           | 720    | 9072          | 0.0           | 850    | 2558          | 0.0           | 980    | 2666          | 0.0           |
| 465    | 24637         | 16.1          | 595    | 126387        | 0.8           | 725    | 8130          | 0.0           | 855    | 2767          | 0.0           | 985    | 2934          | 0.0           |
| 470    | 16738         | 12.0          | 600    | 123477        | 0.5           | 730    | 7149          | 0.0           | 860    | 2826          | 0.0           | 990    | 4120          | 0.0           |
| 475    | 13456         | 10.3          | 605    | 118718        | 0.3           | 735    | 6311          | 0.0           | 865    | 2385          | 0.0           | 995    | 3858          | 0.0           |
| 480    | 13081         | 10.5          | 610    | 112091        | 0.2           | 740    | 5711          | 0.0           | 870    | 3194          | 0.0           | 1000   | 3405          | 0.0           |
| 485    | 14734         | 12.1          | 615    | 105039        | 0.1           | 745    | 5111          | 0.0           | 875    | 3189          | 0.0           |        |               |               |

**Summary**

$R_f = 71.7$   
 $R_g = 96.9$   
 CIE  $R_a = 71.2$   
 $R_g = -29.7$



**Color Vector Graphics**



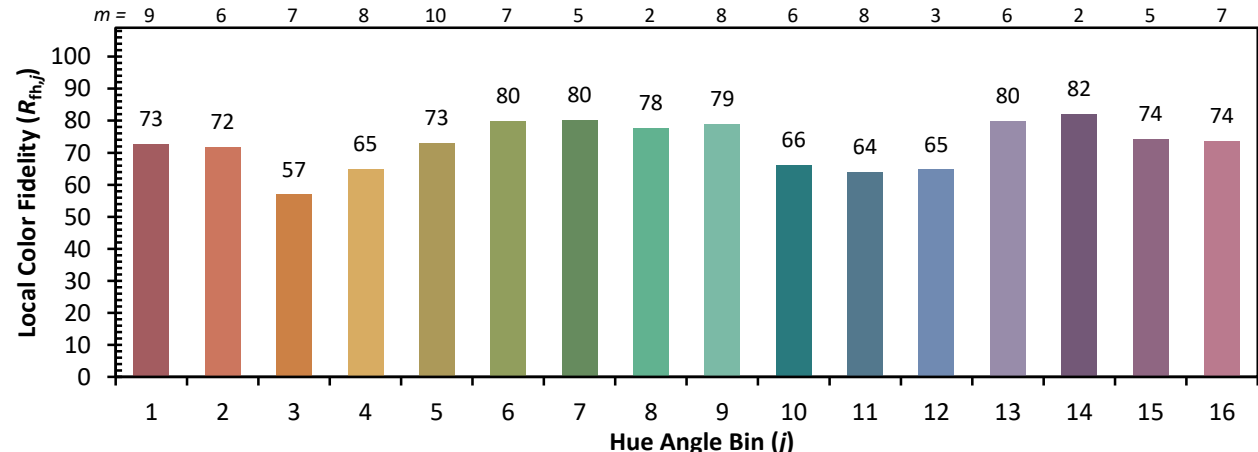
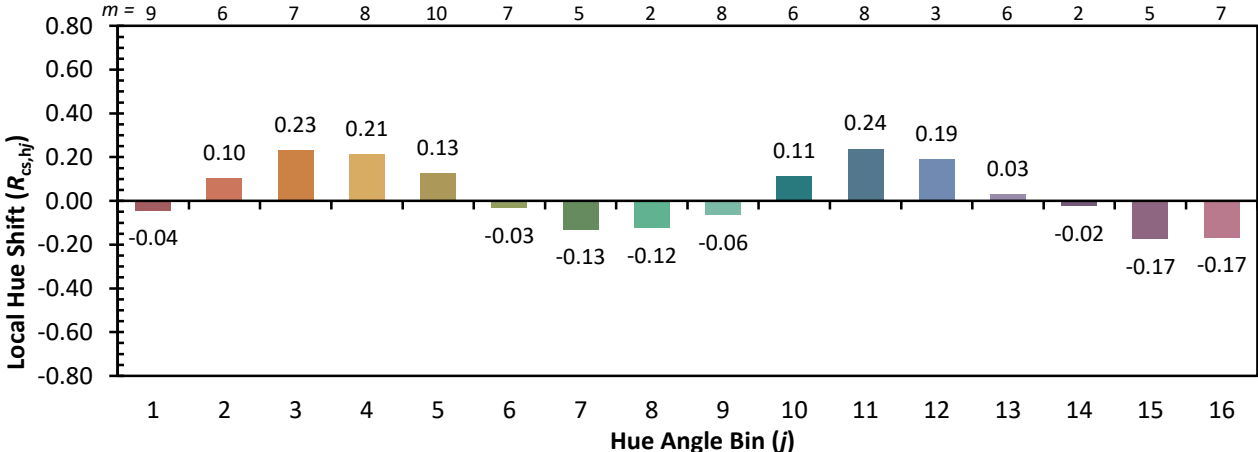
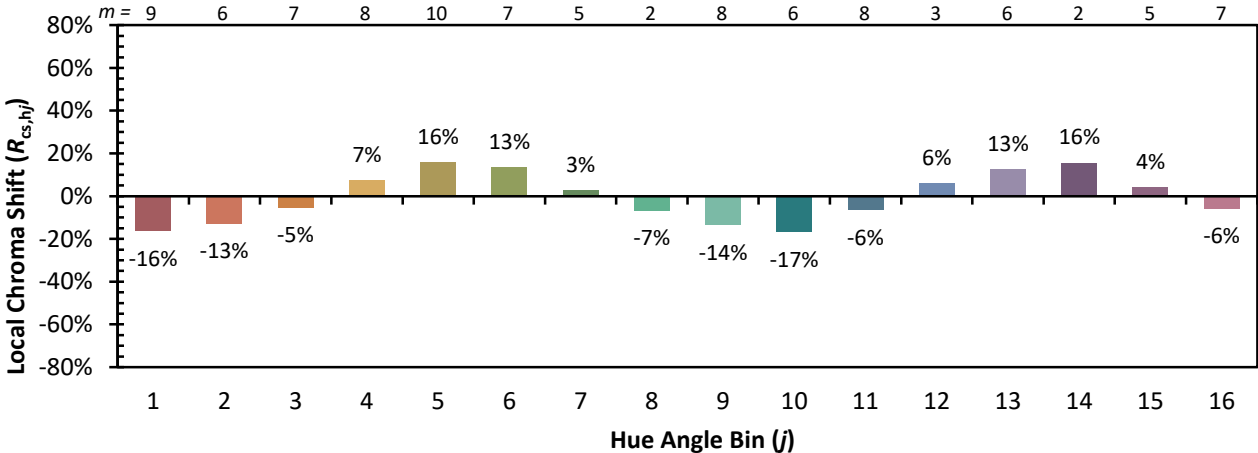
**Individual Sample Fidelity Index ( $R_{f,i}$ )**

|            |            |            |            |
|------------|------------|------------|------------|
| CES01 = 85 | CES26 = 55 | CES51 = 86 | CES76 = 45 |
| CES02 = 61 | CES27 = 80 | CES52 = 87 | CES77 = 68 |
| CES03 = 30 | CES28 = 79 | CES53 = 74 | CES78 = 49 |
| CES04 = 70 | CES29 = 51 | CES54 = 81 | CES79 = 77 |
| CES05 = 47 | CES30 = 60 | CES55 = 80 | CES80 = 75 |
| CES06 = 50 | CES31 = 56 | CES56 = 69 | CES81 = 75 |
| CES07 = 40 | CES32 = 52 | CES57 = 67 | CES82 = 90 |
| CES08 = 39 | CES33 = 62 | CES58 = 69 | CES83 = 85 |
| CES09 = 29 | CES34 = 65 | CES59 = 86 | CES84 = 87 |
| CES10 = 74 | CES35 = 81 | CES60 = 91 | CES85 = 83 |
| CES11 = 57 | CES36 = 92 | CES61 = 85 | CES86 = 72 |
| CES12 = 63 | CES37 = 74 | CES62 = 81 | CES87 = 77 |
| CES13 = 42 | CES38 = 69 | CES63 = 72 | CES88 = 77 |
| CES14 = 74 | CES39 = 92 | CES64 = 69 | CES89 = 72 |
| CES15 = 71 | CES40 = 86 | CES65 = 64 | CES90 = 75 |
| CES16 = 46 | CES41 = 84 | CES66 = 63 | CES91 = 91 |
| CES17 = 49 | CES42 = 75 | CES67 = 60 | CES92 = 66 |
| CES18 = 56 | CES43 = 70 | CES68 = 67 | CES93 = 80 |
| CES19 = 72 | CES44 = 98 | CES69 = 77 | CES94 = 56 |
| CES20 = 65 | CES45 = 80 | CES70 = 57 | CES95 = 72 |
| CES21 = 86 | CES46 = 77 | CES71 = 53 | CES96 = 78 |
| CES22 = 78 | CES47 = 74 | CES72 = 84 | CES97 = 83 |
| CES23 = 92 | CES48 = 66 | CES73 = 47 | CES98 = 73 |
| CES24 = 91 | CES49 = 76 | CES74 = 96 | CES99 = 63 |
| CES25 = 72 | CES50 = 85 | CES75 = 52 |            |





Color Rendition by Hue-Angle Bin



Measure Comparisons



(END OF REPORT)